

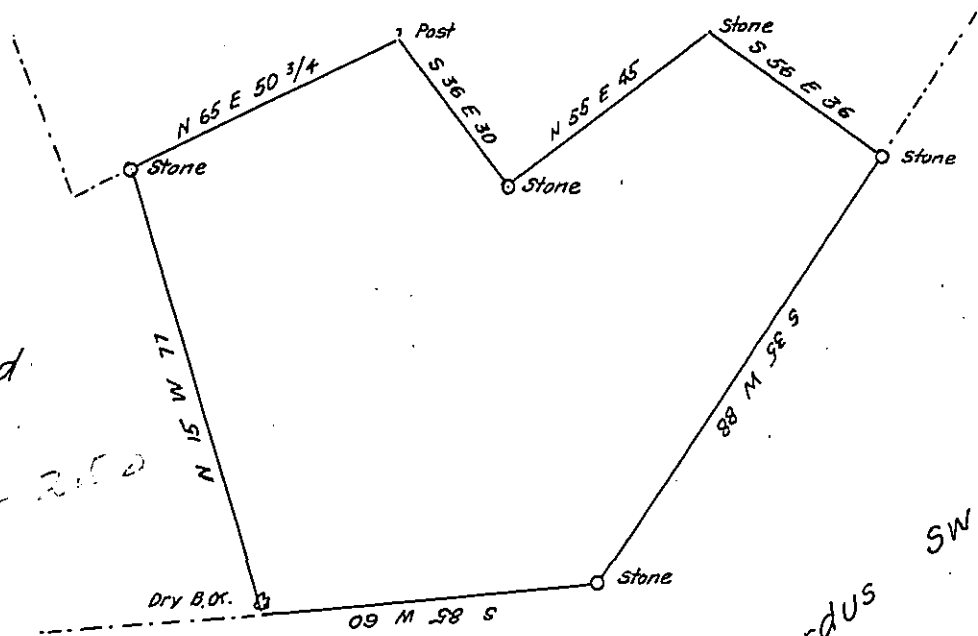
Lehman -  
PIKE

✓

Peter Swartwood

Late Jacob Swartwood

A. 171-250



Late Barnardus Swartwood

By Virtue of a Warrant <sup>for 75<sup>05</sup></sup> dated the 12-February 1785  
 Surveyed the 4-December 1789 to John Mushbach the above des-  
 cribed tract of land Situate in Delaware Township Northampton County  
 Containing Forty Seven Acres one hundred and fifty perches and the  
 allowance of Six P. Cent &c<sup>a</sup>

P—

Geo. Palmer—

Daniel Brodhead Esquire

Survey<sup>r</sup> General.

IN TESTIMONY that the above is a copy of the original remaining on file in  
 the Department of Internal Affairs of Pennsylvania, made  
 conformably to an Act of Assembly approved the 16th day of  
 February, 1833, I have hereunto set my Hand and caused  
 the Seal of said Department to be affixed at Harrisburg,  
 this fifteenth day of November 1905

*James D. Pearson*  
 Secretary of Internal Affairs.